

2N2904A TO-5  
2N2905A TO-5

SILICON  
PNP TRANSISTORS



TO-5 CASE



www.centrasemi.com

**DESCRIPTION:**

The CENTRAL SEMICONDUCTOR 2N2904A TO-5 and 2N2905A TO-5 are silicon PNP transistors manufactured by the epitaxial planar process, designed for small signal, general purpose and switching applications.

**MARKING CODES: 2N2904A TO-5: 2N2904A  
2N2905A TO-5: 2N2905A**

**MAXIMUM RATINGS:** ( $T_A=25^\circ\text{C}$  unless otherwise noted)

	SYMBOL		UNITS
Collector-Base Voltage	$V_{CBO}$	60	V
Collector-Emitter Voltage	$V_{CEO}$	60	V
Emitter-Base Voltage	$V_{EBO}$	5.0	V
Continuous Collector Current	$I_C$	0.6	A
Power Dissipation	$P_D$	0.8	W
Power Dissipation ( $T_C=25^\circ\text{C}$ )	$P_D$	3.0	W
Operating and Storage Junction Temperature	$T_J, T_{stg}$	-65 to +200	$^\circ\text{C}$

**ELECTRICAL CHARACTERISTICS:** ( $T_A=25^\circ\text{C}$ )

SYMBOL	TEST CONDITIONS	MIN	MAX	UNITS
$I_{CBO}$	$V_{CB}=50\text{V}$		10	nA
$I_{CEV}$	$V_{CE}=30\text{V}, V_{EB}=0.5\text{V}$		50	nA
$BV_{CBO}$	$I_C=10\mu\text{A}$	60		V
$BV_{CEO}$	$I_C=10\text{mA}$	60		V
$BV_{EBO}$	$I_E=10\mu\text{A}$	5.0		V
$V_{CE(SAT)}$	$I_C=150\text{mA}, I_B=15\text{mA}$		0.4	V
$V_{CE(SAT)}$	$I_C=500\text{mA}, I_B=50\text{mA}$		1.6	V
$V_{BE(SAT)}$	$I_C=150\text{mA}, I_B=15\text{mA}$		1.3	V
$V_{BE(SAT)}$	$I_C=500\text{mA}, I_B=50\text{mA}$		2.6	V
$f_T$	$V_{CE}=20\text{V}, I_C=50\text{mA}, f=100\text{MHz}$	200		MHz
$C_{ob}$	$V_{CB}=10\text{V}, f=100\text{kHz}$		8.0	pF
$t_{on}$	$V_{CC}=30\text{V}, I_C=150\text{mA}, I_B=15\text{mA}$		45	ns
$t_{off}$	$V_{CC}=6.0\text{V}, I_C=150\text{mA}, I_{B1}=I_{B2}=15\text{mA}$		180	ns

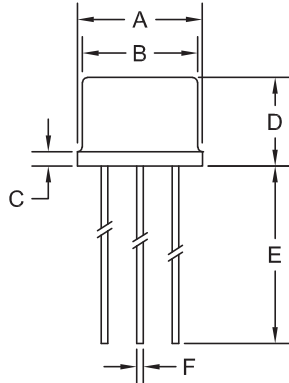
		2N2904A		2N2905A	
		MIN	MAX	MIN	MAX
$h_{FE}$	$V_{CE}=10\text{V}, I_C=100\mu\text{A}$	40	-	75	-
$h_{FE}$	$V_{CE}=10\text{V}, I_C=1.0\text{mA}$	40	-	100	-
$h_{FE}$	$V_{CE}=10\text{V}, I_C=10\text{mA}$	40	-	100	-
$h_{FE}$	$V_{CE}=10\text{V}, I_C=150\text{mA}$	40	120	100	300
$h_{FE}$	$V_{CE}=10\text{V}, I_C=500\text{mA}$	40	-	50	-

R1 (6-April 2015)

2N2904A TO-5  
 2N2905A TO-5  
 SILICON  
 PNP TRANSISTORS

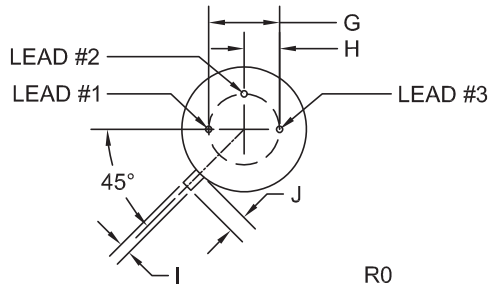


TO-5 CASE - MECHANICAL OUTLINE



SYMBOL	DIMENSIONS			
	INCHES		MILLIMETERS	
A (DIA)	0.335	0.370	8.51	9.40
B (DIA)	0.315	0.335	8.00	8.51
C	-	0.040	-	1.02
D	0.240	0.260	6.10	6.60
E	1.500	1.752	38.1	44.5
F (DIA)	0.016	0.021	0.41	0.53
G (DIA)	0.200		5.08	
H	0.100		2.54	
I	0.028	0.034	0.71	0.86
J	0.029	0.045	0.74	1.14

TO-5 (REV: R0)



LEAD CODE:

- 1) Emitter
- 2) Base
- 3) Collector

MARKING CODES: 2N2904A TO-5: 2N2904A  
 2N2905A TO-5: 2N2905A

R0

R1 (6-April 2015)

## OUTSTANDING SUPPORT AND SUPERIOR SERVICES



---

### PRODUCT SUPPORT

Central's operations team provides the highest level of support to insure product is delivered on-time.

- Supply management (Customer portals)
- Inventory bonding
- Consolidated shipping options
- Custom bar coding for shipments
- Custom product packing

---

### DESIGNER SUPPORT/SERVICES

Central's applications engineering team is ready to discuss your design challenges. Just ask.

- Free quick ship samples (2<sup>nd</sup> day air)
- Online technical data and parametric search
- SPICE models
- Custom electrical curves
- Environmental regulation compliance
- Customer specific screening
- Up-screening capabilities
- Special wafer diffusions
- PbSn plating options
- Package details
- Application notes
- Application and design sample kits
- Custom product and package development

---

### REQUESTING PRODUCT PLATING

1. If requesting Tin/Lead plated devices, add the suffix "TIN/LEAD" to the part number when ordering (example: 2N2222A TIN/LEAD).
2. If requesting Lead (Pb) Free plated devices, add the suffix "PBFREE" to the part number when ordering (example: 2N2222A PBFREE).

---

### CONTACT US

#### Corporate Headquarters & Customer Support Team

Central Semiconductor Corp.  
145 Adams Avenue  
Hauppauge, NY 11788 USA  
Main Tel: (631) 435-1110  
Main Fax: (631) 435-1824  
Support Team Fax: (631) 435-3388  
[www.centrasemi.com](http://www.centrasemi.com)

**Worldwide Field Representatives:**  
[www.centrasemi.com/wwreps](http://www.centrasemi.com/wwreps)

**Worldwide Distributors:**  
[www.centrasemi.com/wwdistributors](http://www.centrasemi.com/wwdistributors)

---

For the latest version of Central Semiconductor's **LIMITATIONS AND DAMAGES DISCLAIMER**, which is part of Central's Standard Terms and Conditions of sale, visit: [www.centrasemi.com/terms](http://www.centrasemi.com/terms)

# Product End of Life Notification

<b>PDN ID:</b>	PDN01015
<b>Notification Date:</b>	12/14/15
<b>Last Buy Date:</b>	6/14/16
<b>Last Shipment Date</b>	12/14/16

Summary: All devices manufactured in the TO-5 package are discontinued and now classified as End of Life (EOL).

Although Central Semiconductor Corp. makes every effort to continue to produce devices that have been proclaimed EOL (End of Life) by various manufacturers, it is an accepted industry practice to discontinue certain devices when customer demand falls below a minimum level of sustainability. Accordingly, the following product(s) have been transitioned to End of Life status as part of Central's Product Management Process. Any replacement product will be noted below. The effective date for placing the last purchase order will be six(6) months from the date of this notice and twelve(12) months from the notice date for final shipments; this may be extended if inventory is available.

<b>Central Part Number</b>	<b>Replacement</b>
ACY18	N/A
ACY20	N/A
BSY32	N/A
CEN1285	N/A
2N1038	N/A
2N1039	N/A
2N1040	N/A
2N1131 TO-5	2N1131
2N1131A T0-5	2N1131A
2N1132 TO-5	2N1132
2N1132 TO-5 W/GOLD	2N1132
2N1175	N/A
2N1191	N/A
2N1194	N/A
2N1301	N/A
2N1302	N/A
2N1303	N/A
2N1304	N/A
2N1305	N/A
2N1306	N/A
2N1307	N/A
2N1308	N/A
2N1309	N/A
2N1310	N/A
2N1311	N/A
2N1373	N/A
2N1377	N/A
2N1499A	N/A
2N1613 TO-5	2N1613
2N2043	N/A
2N2160	N/A
2N2171	N/A
2N2218A TO-5	2N2218A
2N2219 TO-5	2N2219A
2N2219A TO-5	2N2219A
2N2374	N/A
2N2382	N/A
2N2904 TO-5	2N2904A

\*\*\* CONTINUED \*\*\*

DISCLAIMER: This End of Life (EOL) notification is in accordance with JEDEC standard JESD48 - Product Discontinuance. Central Semiconductor Corp. will make every effort to offer life-time buy (LTB) opportunities and/or offer replacement devices to existing customers for discontinued devices, however, one or both may not be possible for all devices. Please contact your local Central Semiconductor sales representative for LTB opportunities/additional information.

# Product End of Life Notification

<b>PDN ID:</b>	PDN01015
<b>Notification Date:</b>	12/14/15
<b>Last Buy Date:</b>	6/14/16
<b>Last Shipment Date</b>	12/14/16

\*\*\* CONTINUED FROM PRIOR PAGE \*\*\*

<b>Central Part Number</b>	<b>Replacement</b>
2N2904A TO-5	2N2904A
2N2905 TO-5	2N2905A
2N3019 TO-5	2N3019
2N3053 TO-5	2N3053
2N3133 TO-5	2N3133
2N3467 TO-5	2N3467
2N3725 TO-5	2N3725
2N388A	N/A
2N396A	N/A
2N398A	N/A
2N4033 TO-5	2N4033
2N4036 TO-5	2N4036
2N404	N/A
2N404A	N/A
2N414	N/A
2N446	N/A
2N491B	N/A
2N492	N/A
2N508A	N/A
2N525	N/A
2N526	N/A
2N527	N/A
2N5416 TO-5	N/A
2N650	N/A
2N697 TO-5	N/A
2N699 TO-5	N/A
2SB492	N/A

Central would be happy to assist you by providing additional information or technical data to help locate an alternate source if we have no replacement available. Please email your requests to [engineering@centrasemi.com](mailto:engineering@centrasemi.com).

**DISCLAIMER:** This End of Life (EOL) notification is in accordance with JEDEC standard JESD48 - Product Discontinuance. Central Semiconductor Corp. will make every effort to offer life-time buy (LTB) opportunities and/or offer replacement devices to existing customers for discontinued devices, however, one or both may not be possible for all devices. Please contact your local Central Semiconductor sales representative for LTB opportunities/additional information.